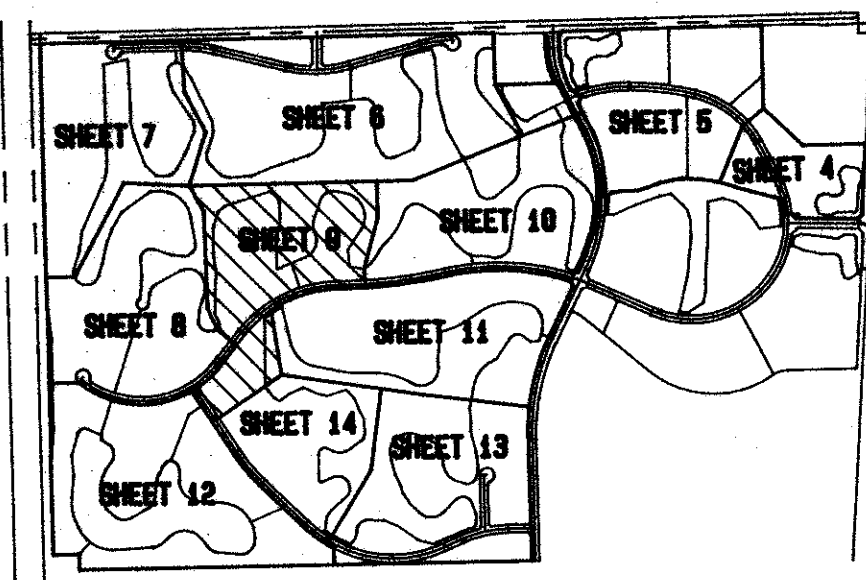
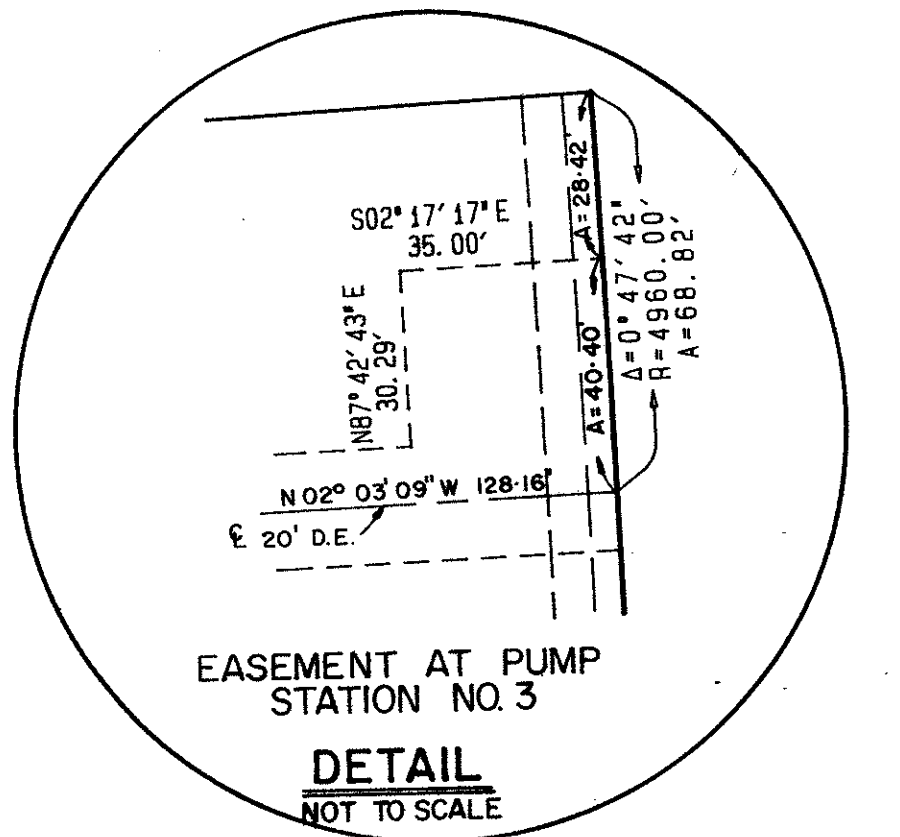
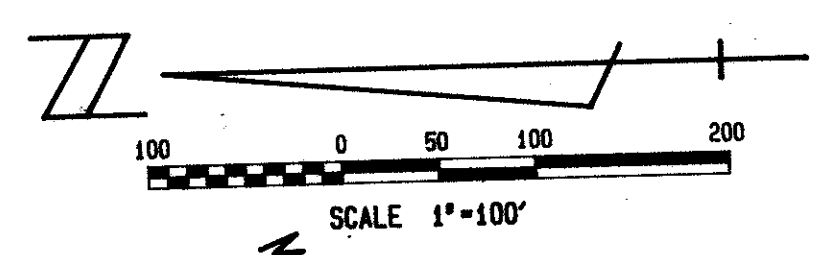
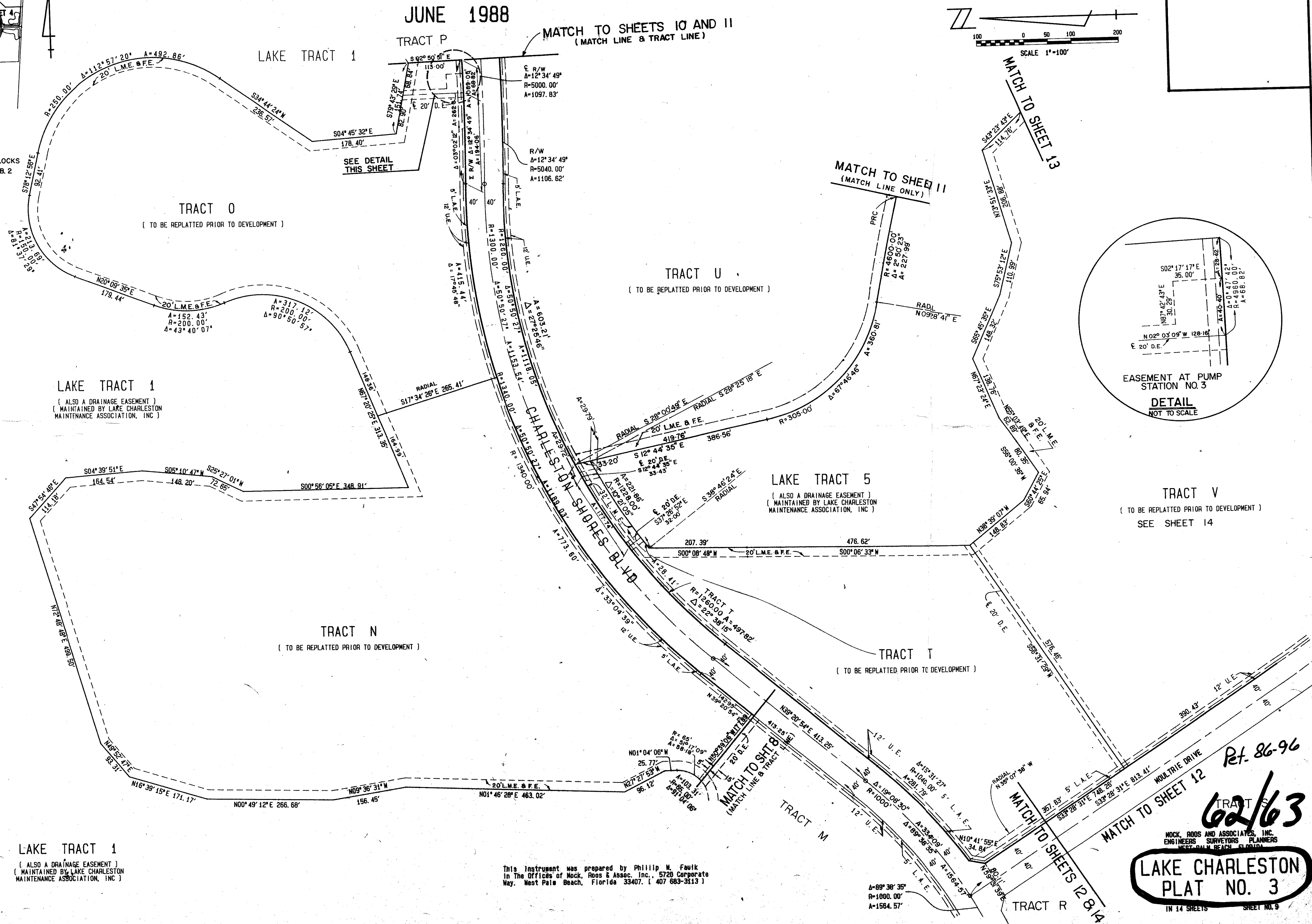


A PART OF LAKE CHARLESTON PLANNED UNIT DEVELOPMENT LAKE CHARLESTON PLAT NO. 3 IN 14 SHEETS SHEET NO. 9



SHEET INDEX

NOTE: ALL PLATTED ROADWAYS CONTAINED IN BLOCKS 40 AND 41 (PALM BEACH FARMS CO. PLAT NO. 3, P.B. 2 Pp. 45-54) WERE ABANDONED BY RESOLUTION NO. R-78-771 (ORB 2891 p. 323)



REVISIONS OF Lake Charleston # 3
BOOK 62 34578, 9, 10, 45/42
PAGE 185A
DATE 4/9
BY 86-96
PUB. DATE
RTS 33467 TR 439

This instrument was prepared by Phillip M. Faulk in the Offices of Mock, Roos & Assoc. Inc., 5720 Corporate Way, West Palm Beach, Florida 33407. (407 683-3113)

MOCK, ROOS AND ASSOCIATES, INC.
ENGINEERS SURVEYORS PLANNERS
LAKE CHARLESTON PLAT NO. 3
IN 14 SHEETS SHEET NO. 9

0533-004